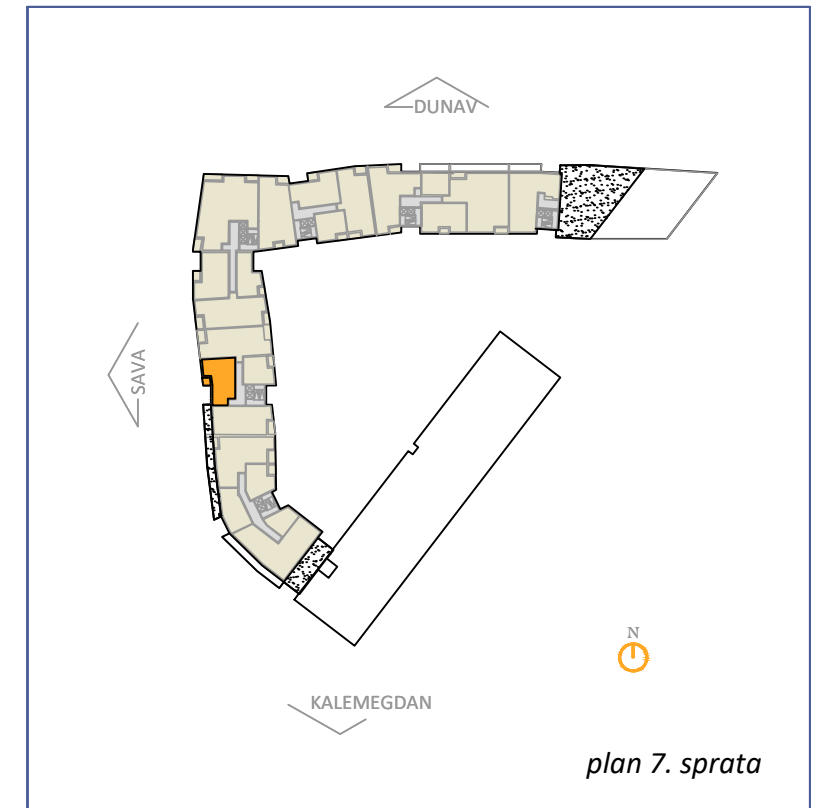


0m 1m 2m 3m



POVRŠINA STANA 73.35 m<sup>2</sup>  
APARTMENT AREA

POVRŠINA TERASA 3.01 m<sup>2</sup>  
TERRACE AREA

**UKUPNA POVRŠINA 76.36 m<sup>2</sup>**  
**TOTAL AREA**

**8.7.2**

**TROSOBAN STAN**