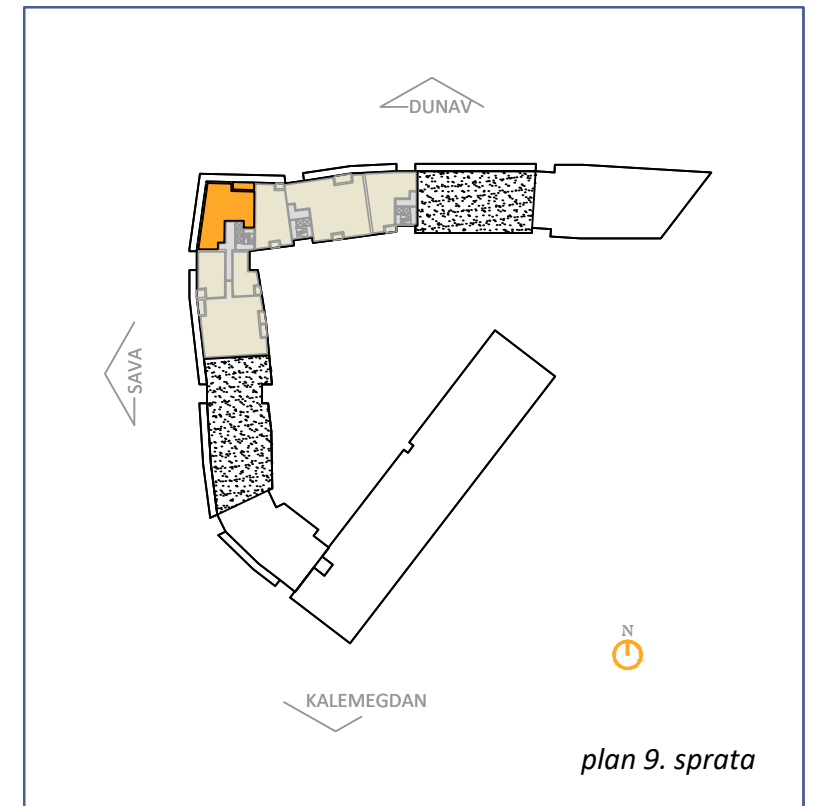




0m 1m 2m 3m



plan 9. sprata

POVRŠINA STANA 153.44 m<sup>2</sup>  
 APARTMENT AREA  
 POVRŠINA TERASA 8.54 m<sup>2</sup>  
 TERRACE AREA  
**UKUPNA POVRŠINA 161.98 m<sup>2</sup>**  
**TOTAL AREA**

**9.9.4**

**ČETVOROSOBAN STAN**