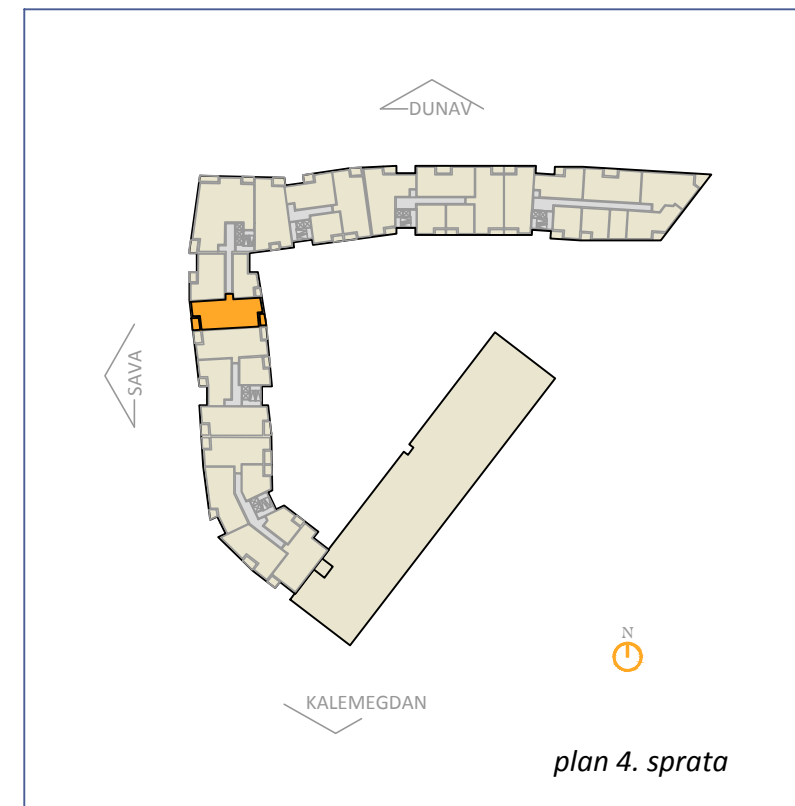


0m 1m 2m 3m



plan 4. sprata

POVRŠINA STANA 118.03 m²
 APARTMENT AREA
 POVRŠINA TERASA 8.55 m²
 TERRACE AREA
UKUPNA POVRŠINA 126.57 m²
TOTAL AREA

9.2.2
 9.3.2
 9.4.2
 9.5.2
 9.6.2
 9.7.2

ČETVOROSOBAN STAN