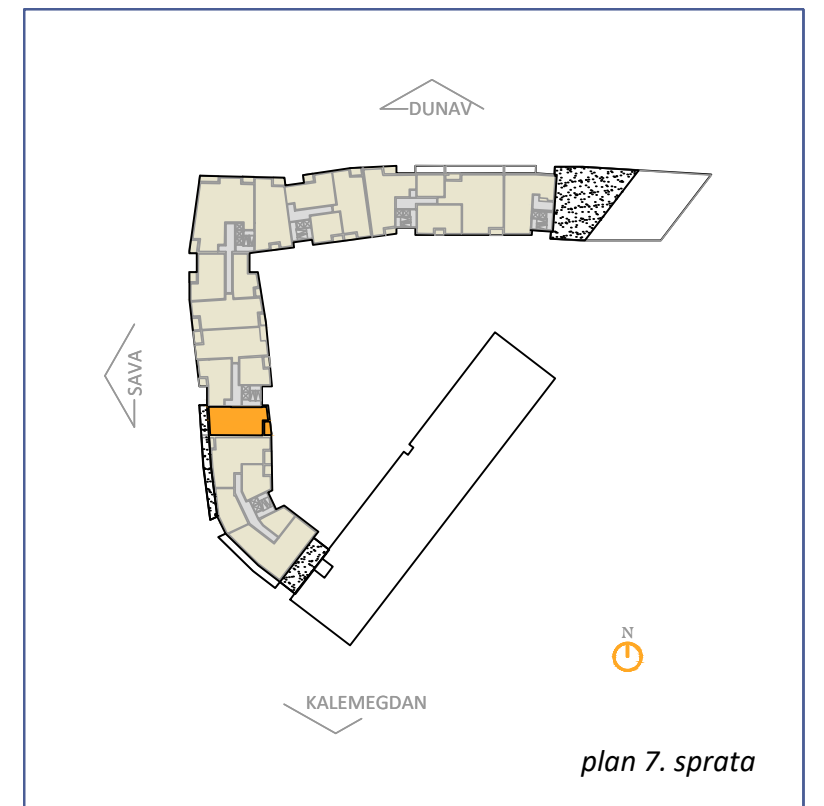


0m 1m 2m 3m



POVRŠINA STANA	105.43 m <sup>2</sup>
APARTMENT AREA	
POVRŠINA TERASA	3.34 m <sup>2</sup>
TERRACE AREA	
<b>UKUPNA POVRŠINA</b>	<b>108.77 m<sup>2</sup></b>
<b>TOTAL AREA</b>	

**8.7.1**

**ČETVOROSOBAN STAN**